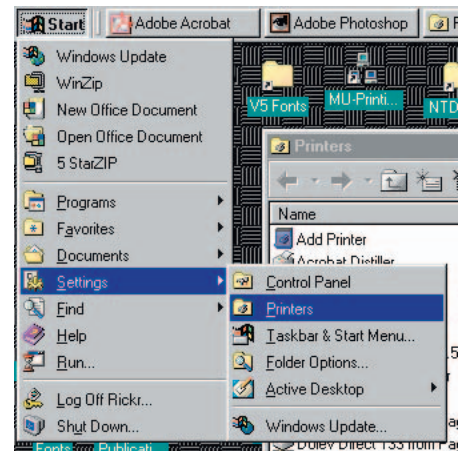


# Setting the Target Printer in PageMaker

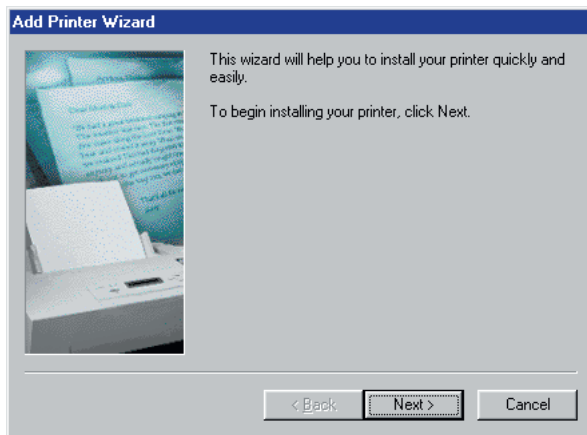
Before you layout anything in PageMaker on a PC that is going to go to a service bureau for offset printing, you need to install the driver for the printer (RIP) the services bureau is going to use for your job, and compose your document to that printer. This step has to happen before the file is RIPped, and if you wait until later, or let the service bureau do it, your document is going to re-flow. Here are the steps for adding the printer for the Printing Services Brisque RIP:

*(There might be additional screens that pop up with more instructions. One common one is to ask you to insert your Windows installation CD. See the back side of this sheet for instructions on setting the target printer in PageMaker.)*

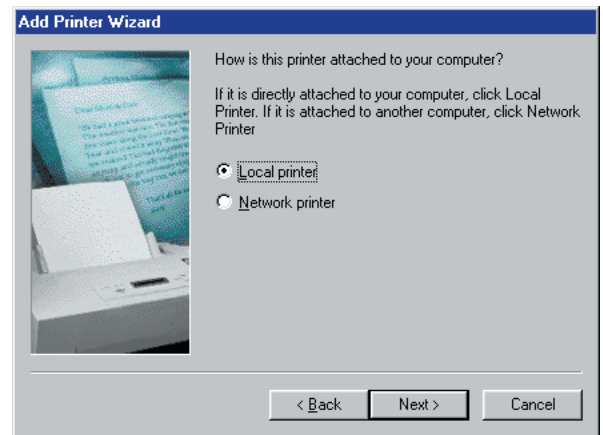
1



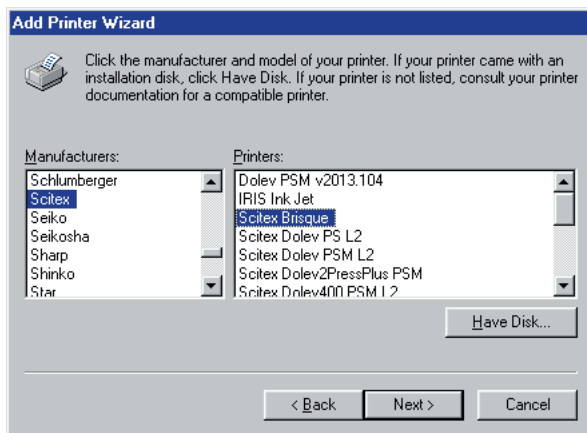
2



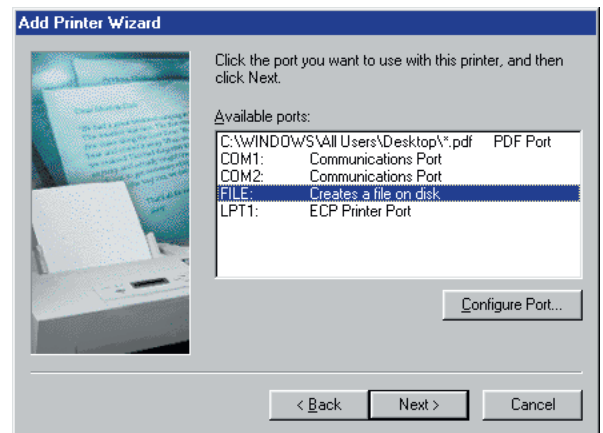
3



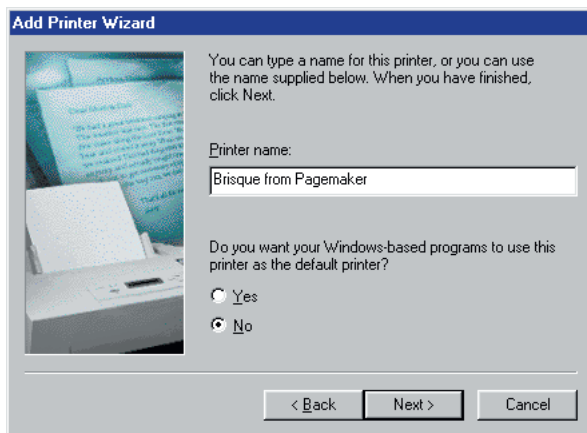
4



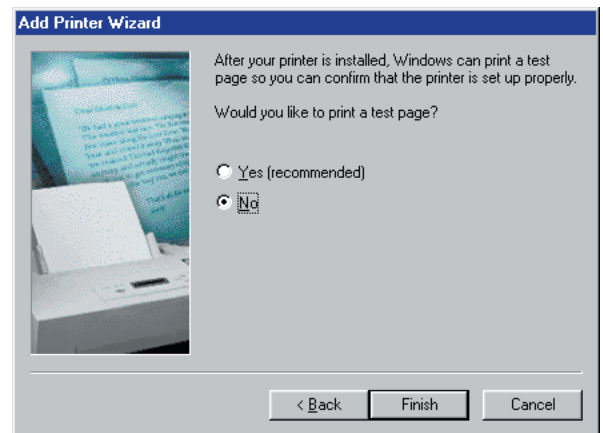
5



6



7



Once you have added the printer, you need to set it as your target printer on every PageMaker file you create for Printing Services. Be sure to pick the resolution **2540** and the printer “**Brisque from Pagemaker on File**” that you just created, following the steps on the other side of this sheet.

